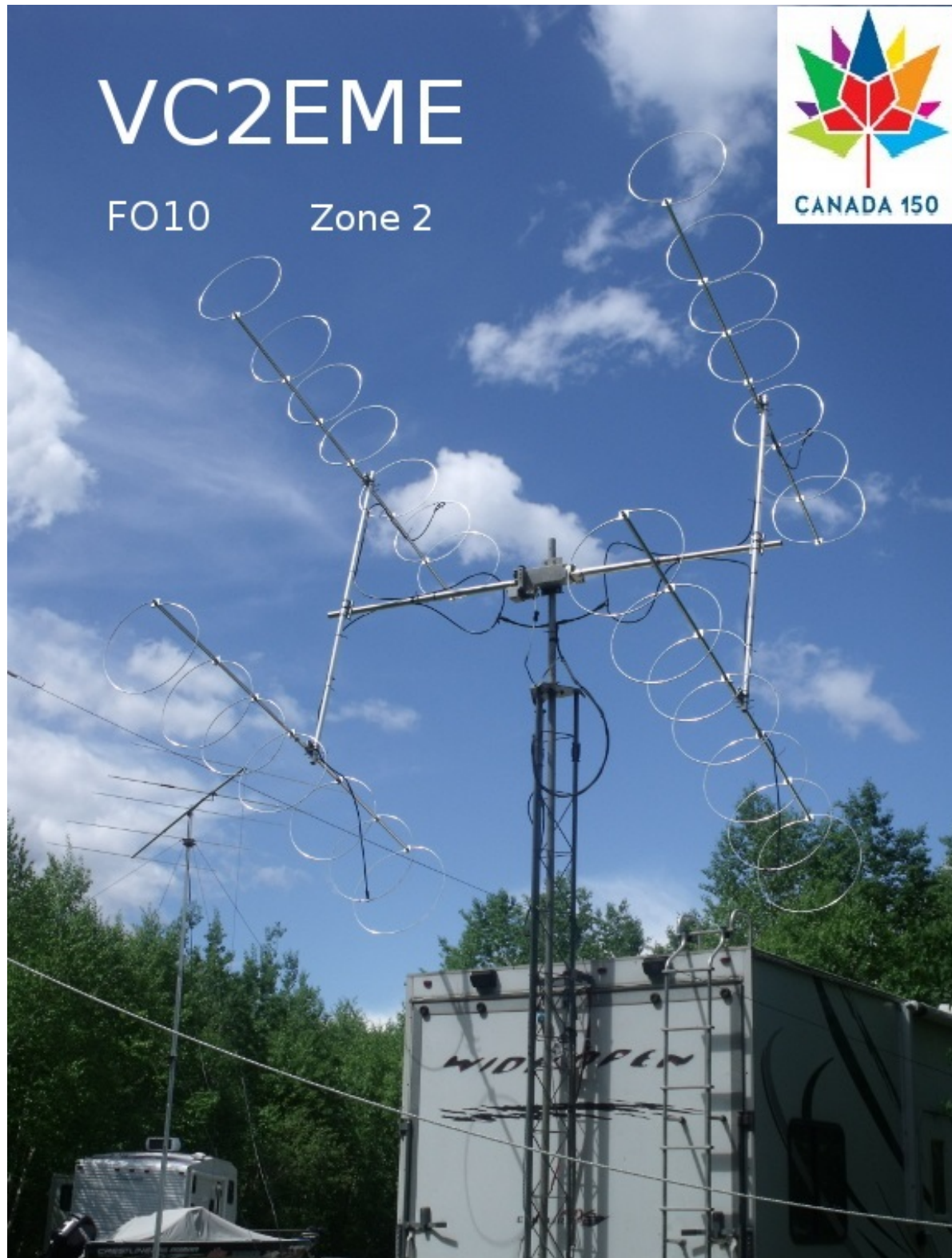


VC2EME

FO10

Zone 2



ACTIVATING ZONE2

VC2EME

FO10le

ACTIVATING ZONE2

VC2EME

WHY ZONE2?

ACTIVATING ZONE2

VC2EME

WHY ZONE2?

- 1) Worked All Zones is an award that requires working all 40 of the CQ Zones. It is relatively easy on HF, but on 2M, it is quite difficult.
- 2) There are a lot of ops that need Zone2 to finish WAZ
- 3) Prior to our expedition, there were only 4 2M WAZs
- 4) Zone2 is reachable by land

THESE STATIONS HAVE NOW COMPLETED THEIR 40 ZONE WAZ AFTER OUR EXPEDITION

HB9Q – Dan

EA6VQ-Gabriel

JR3REX-Seiichi

I2FAK-Franco

DF2ZC-Bernd

DK5EW-Erwin

PE1L-Rene'

IK1UWL-Gio

UT6UG-Val

PA2CHR-Chris

I2RV-Pietro

I1ANP-Mario

THERE MAY BE OTHERS

WHERE IS ZONE2 ANYWAY?

CQ SAYS:

ZONE 2. NORTHEASTERN ZONE OF NORTH AMERICA: VO2 (Labrador), THE PORTION OF VE2 QUEBEC NORTH OF THE 50th PARALLEL, AND THE NUNAVUT TERRITORIES EAST OF 102 DEGREES.

THE CLOSEST PLACE WE COULD FIND IN ZONE2 WAS JUST NORTH OF MAGAGMI IN THE PROVINCE OF QUEBEC

WE HAD TWO TEAMS

THE ONTARIO TEAM

BOB-VE3WY

PETER-VE3ADQ

MARSHALL-K5QE



I FLEW TO TORONTO TO JOIN
BOB. PETER CAME DIRECT
FROM SAULT STE. MARIE

THE TEXAS TEAM

CHUCK-AF8Z

BILL-N5YA

KENNY-K5KNY



THE TEXAS TEAM LEFT FROM
EAST TEXAS PULLING BILL'S
TOYHAULER RV-PACKED INSIDE
WAS TWO STATIONS AND ALL
OUR GEAR.

MURPHY STRUCK!

THE TX TEAM LEFT ON JUNE 18TH. THEY GOT ABOUT 100Mi AND SHEARED OFF A TIRE, WHEEL AND HUB ON THE RV.

THEY LOST A DAY PROCURING THE PARTS TO FIX THIS AND PROCEEDED THE NEXT DAY.

THIS TIME, THEY MADE IT TO
FORREST CITY, AR AND
SHEARED OFF TWO WHEELS,
TIRES, AND HUBS!

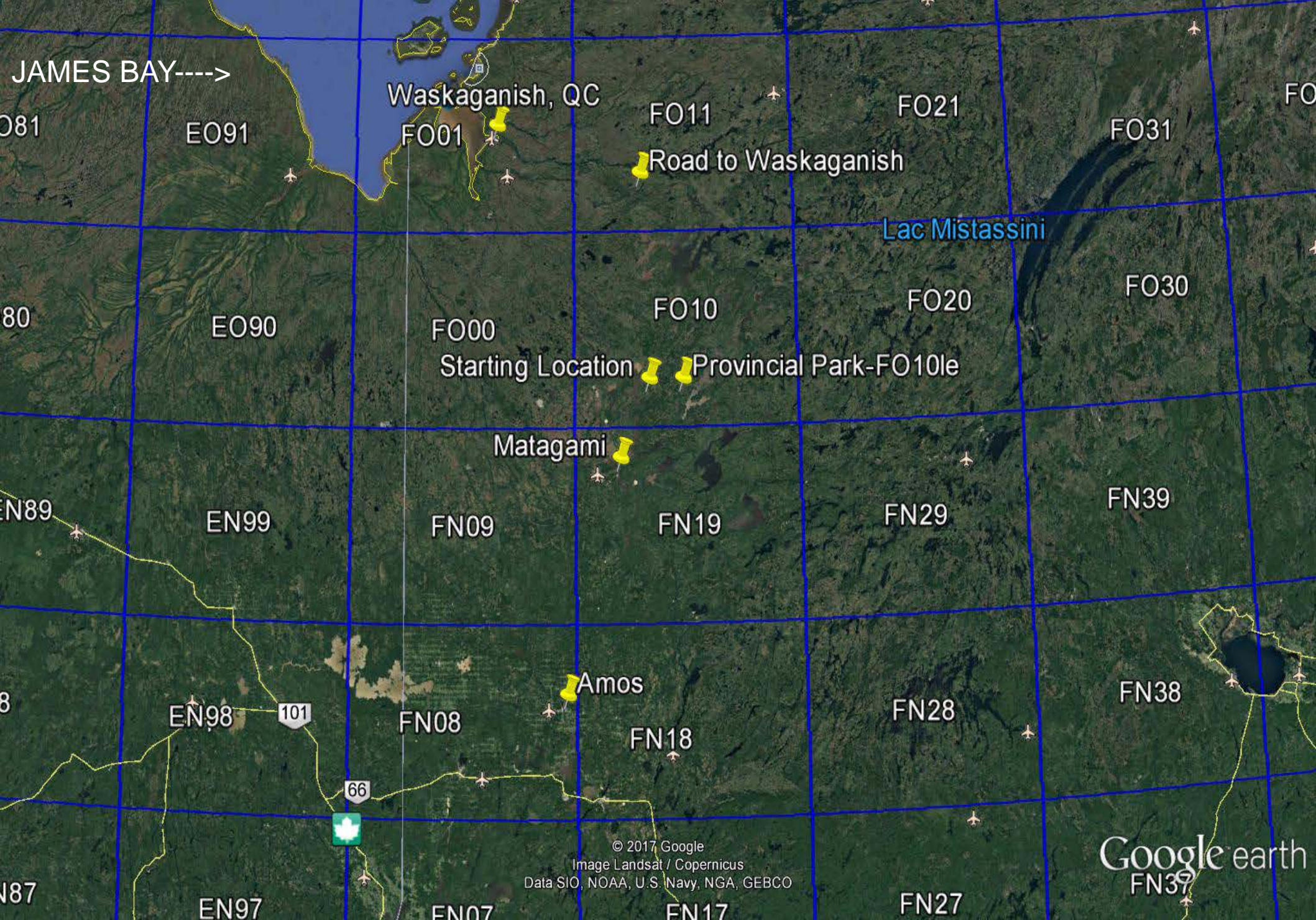
FORTUNATELY, STEVE-AG4V
KNEW OF A GURU IN FORREST
CITY THAT COULD FIX THE
AXLES PROPERLY. 3 MORE
DAYS WERE LOST.

MEANWHILE BACK AT THE RANCH, I WAS DYING AT BOB'S HOUSE OUTSIDE TORONTO. BOB AND I DROVE UP TO THE SITE ON THURSDAY AND FRIDAY.

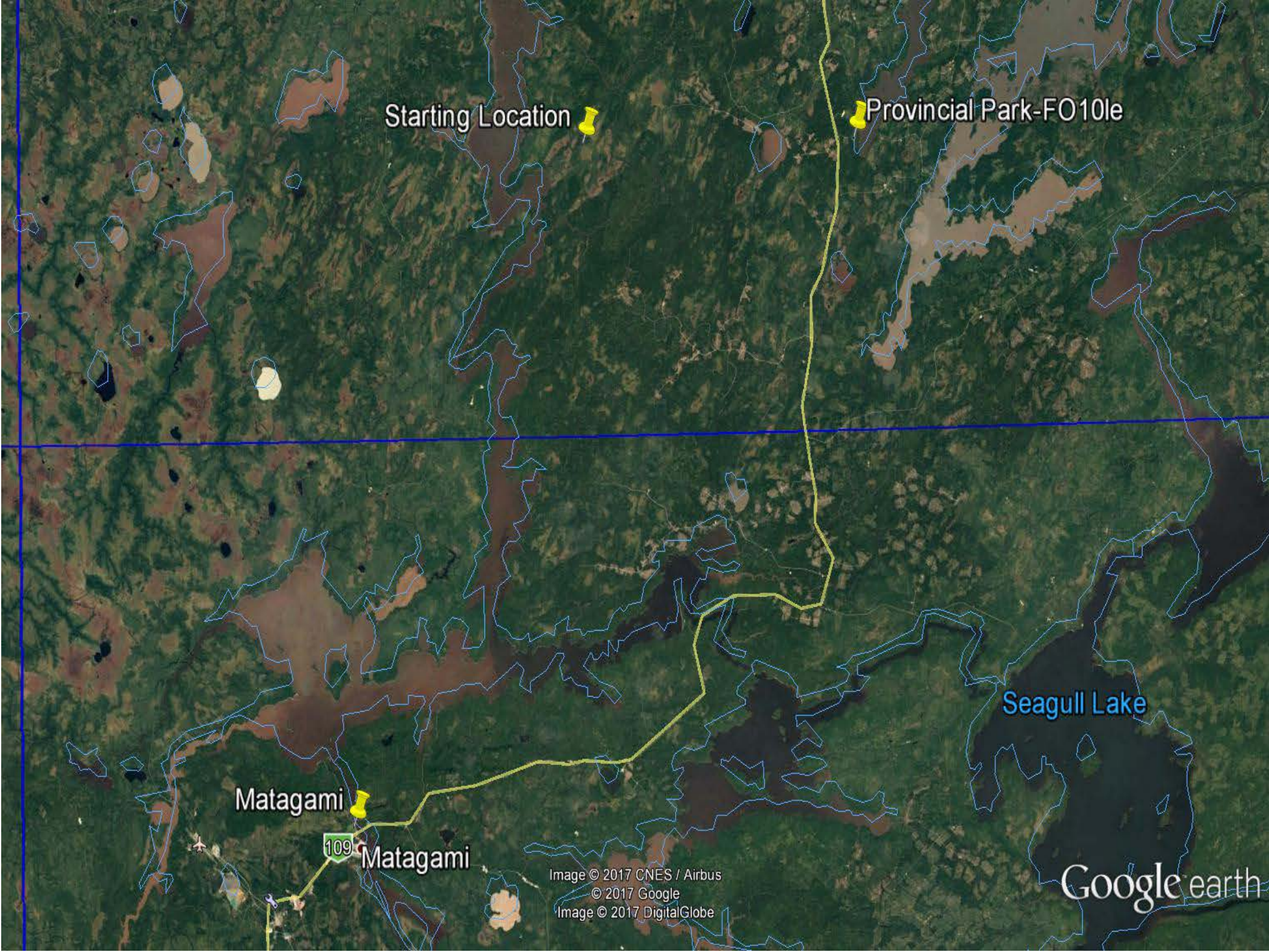
THE TEXAS TEAM GOT THE AXLES FIXED AND THEY DROVE ALMOST STRAIGHT THROUGH TO ARRIVE SAT NIGHT

NOW FOR SOME PERSEPECTIVE

LET'S LOOK AT SOME MAPS



REMEMBER—TORONTO IS FN03. THAT IS 7 GRIDS AWAY!!



Starting Location

Provincial Park-FO10le

Matagami

109

Matagami

Seagull Lake

Image © 2017 CNES / Airbus
© 2017 Google
Image © 2017 DigitalGlobe

Google earth



Route de la Baie James

Provincial Park-FO10le

Route de la Baie James

Provincial Park-FO10le



© 2017 Google
Image © 2017 DigitalGlobe

Google earth

Provincial Park-FO10le

X OUR SPOT

BOB-VE3WY AND I MADE A
RECONNAISSANCE OF THE
AREA IN OCTOBER, 2016

WE THOUGHT THAT THE
NATIVE AMERICAN TOWN OF
WASKAGANISH, QC WOULD BE
AN IDEAL PLACE FOR THE
EXPEDITION



Signs in 3 Languages



Cree First Nations Band Office

WE SPENT TWO DAYS IN
WASKAGANISH, BUT WE
EVENTUALLY DECIDED THAT IT
WAS NOT GOING TO WORK.

ON THE WAY HOME, BOB
SUGGESTED THAT WE LOOK AT
THE PROVINCIAL PARK, AS
OTHER HAMS HAD BEEN THERE

HERE IS WHAT WE SAW IN THE PARK 2016



HERE IS WHAT WE FOUND WHEN WE GOT THERE 2017



THE PLACE WAS PACKED!
AAAAAAaaaaaaaRGH!!!

THE LOCALS “FORGOT” TO TELL
US THAT THE WEEKEND WE
HAD PICKED WAS A QUEBEC
HOLIDAY PLUS SOMEONE HAD
ORGANIZED A FISHING
TOURNAMENT THERE TOO. WE
WERE LUCKY TO GET A SPOT.

BOB AND I GRABBED THE LAST
SPOT AVAILABLE—RIGHT NEXT
TO THE 2 CHEMICAL POTTIES.

WHY DID I HAVE TO PICK THAT
WEEKEND FOR THE
EXPEDITON?

GOOD QUESTION

BECAUSE THE DEGRADATION WAS EXTREMELY LOW

JUN 26,2017 50 ° 3 ' 45" N MOON POSITION RANGE: 219,725 MI
 MONDAY 77 ° 2 ' 30" W (PREPARED BY GJTRACKER) P +3 DAYS 16.32'SD
 JD: 2457930.5

(QC Park in FO10le)

APPROX 144 MHZ DB

UTC	NOTES	W AZIMUTH	ELEV	GHA	DEC	RT ASCN	SKY °K	DEGRADATION
1300		73.0	6.5	338.2	16.1	8H 44M	187	0.4
1400		83.8	15.5	353.0	16.0	8H 46M	185	0.3
1500		94.9	24.8	7.8	15.9	8H 49M	183	0.3
1600		107.1	33.8	22.7	15.8	8H 51M	181	0.3
1700		121.4	42.3	37.5	15.6	8H 54M	179	0.3
1800		138.8	49.3	52.2	15.4	8H 56M	176	0.2
1900		160.3	54.0	66.8	15.2	8H 59M	174	0.2
2000	E	184.7	55.1	81.4	15.0	9H 1M	174	0.2
2100	E	208.1	52.3	95.8	14.8	9H 3M	175	0.2
2200	N	227.9	46.4	110.2	14.5	9H 6M	175	0.2
2300	N	243.8	38.6	124.4	14.3	9H 8M	176	0.3
2400	A	256.9	29.7	138.6	14.1	9H 11M	177	0.3

THE OTHER DAYS WERE SIMILAR
BUT JUST A BIT HIGHER

SUNDAY MORNING
WE STARTED
SETTING UP THE
STATIONS.

AFTER A GREAT
BREAKFAST OF
BACON & EGGS,
WE STARTED
UNLOADING ALL
THE GEAR FROM
THE TOY HAULER.









WE BUILT UP THE LOOP YAGIS AND INSTALLED THE TOWER













WE MADE OUR FIRST QSO WITH
HB9Q AT 1956Z ON SUNDAY

THE SCORE SHEET FOR 2M IS:

SUNDAY 25 CONTACTS

MONDAY 87 CONTACTS

TUESDAY 33 CONTACTS

WEDNESDAY 14 CONTACTS

A TOTAL OF 159 QSOs

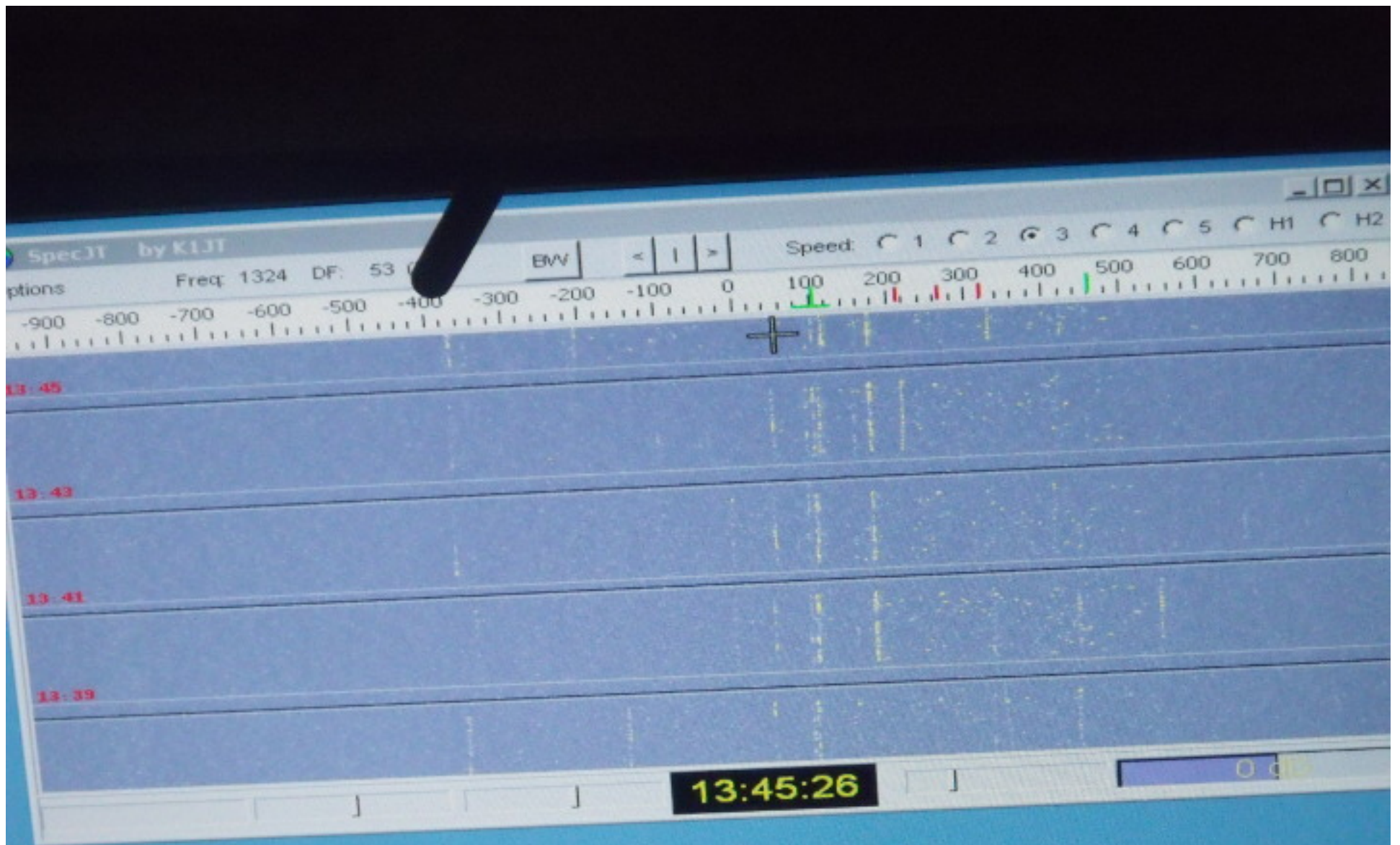
ON 2M WE HAD 151 UNIQUE
CALLS, 118 GRIDS IN 34
COUNTRIES, SO WE EARNED A
VUCC AWARD

WE HAD ALL CONTINENTS
WORKED EXCEPT ANTARCTICA
SO WE EARNED A WAC AWARD

BOB IS GOING TO APPLY FOR
THESE AWARDS



Peter VE3ADQ



8-10 Stations Calling

Three Decodes

WSJT 10.0 r6088 by K1JT

File Setup View Mode Decode Save Band Help

Moon
 Az: 81.20
 El: 13.37
 Dop: 66
 Dgrd: -0.6

Time US: 134300

FileID	Sync	dB	DT	DF	W	VC2EME	ISMEK	JH55	1	10
133700	6	-20	2.8	61	3 *	VC2EME	ISMEK	JH55	0	10
133700	3	-22	2.8	24	3 *	VC2EME	ISMEK	JN65	1	10
133900	10	-24		431	4	VC2EME	I2FAK	JH45	1	10
133900	5	-17	3.0	164	4 *	VC2EME	I2FAK	JH45	1	10
134100	3	-17	2.9	170	3 *					
134300	10	-25		107	2					

134300 2 5/8

Log QSO Stop Monitor

To radio: S52LM
 Grid: JN65LX
 AZ: 56
 3938 mi
 Disc: 0.0

2017 Jun 26
 13:45:16

Decode Erase Clear Avg Include Exclude Tx Stop

S52LM VC2EME FO10
 S52LM VC2EME FO10 000
 RO
 RRR
 73
 CG VC2EME FO10

30: Agassiz
 380: Maui
 385: Rodriguez Island
 3C: Equatorial Guinea

Call: GO to DXCC

Mode
 Manual
 Tracking

11.9 13.4

UNFORTUNATELY, 6M WAS VERY
POOR DURING THIS TIME.

BOB, PETER, & CHUCK
OPERATED 6M OFF AND ON, BUT
ONLY MADE 101 CONTACTS.

THAT WAS A SHAME, BECAUSE
WE HAD A VERY GOOD 6M
STATION, BUT NO PROPAGATION



5-Element 6m Yagi on 17' Boom



Our Site

There were lots of biting insects!

Black Flies, Mosquitoes,
Deer Flies, & Horse Flies

We Were Ready
For Them!



Bite me!



SPINNING LANE
CANADA

The Team

MARSHALL
K5QE

VC2EME
PETER
VE3ADQ

UNDENIABLY
COUNTRY
SHIRT
KENNY
K5KNY

BILL
N5YA

CHUCK
AF8Z

BOB
VE3WY

